

true training
true anatomy
true to life

tru
corp

AIRSIM 



true training
true anatomy
true to life

TruCorp have a professional commitment to medical best practice and patient wellbeing.

TruCorp are taking medical training to new levels of realism through development of anatomically correct simulation systems.

For too long, health professionals have had to tolerate unrealistic mannequins.

In response, TruCorp have designed, engineered and produced the AirSim range bringing highly realistic and fully functional airway training systems to the market.

Designed by professionals for professionals

To ensure maximum realism, the Airsim airway has been created from data collected from a CT scan of a person. The airway is moulded in one piece and put through a sophisticated dipping process.

An integrated and seamless construction offers true to life functionality.

The airway unit is manufactured from a polymer compound which gives a positive tactile feedback during and after correct placement of an airway device.

For realism during fiberoptic examination the airway provides accurate realisation of internal anatomical features.

Airsim's tongue has a realistic shape and texture which responds as it would in real life and can be inflated to variable sizes to simulate different swollen tongue scenarios.

The teeth are constructed from denture moulds to truly represent this part of the human anatomy giving excellent realism.

A "breakaway teeth" option is available to demonstrate the effects of bad practice.

Airsim's jaw has a unique spring loaded mandible allowing jaw thrust and realistic mouth opening together with the full range of jaw and mouth movements.

The neck has a novel joint construction giving a range of extension and flexion.

The materials used in the construction of the units combine high level performance with portability. An integrated carbon fibre effect base gives strength and durability. The units can be easily transported in their lightweight carry cases.

The product provides a true anatomical fit and seal which makes it indispensable for the training of the insertion of all currently available supraglottic devices such as laryngeal masks and tubes.

Airsim is invaluable as a training tool in the techniques of laryngoscopy, tracheal intubation, fiberoptic examination, insertion of double lumen tracheal tubes and needle cricothyroidotomy.

AirSim Standard

The AirSim Standard is uniquely constructed to allow realistic feedback during airway management procedures and provides true, anatomically correct and visually accurate internal features.

The novel neck construction allows the head to be moved and secured in a number of positions. This ranges from the standard “sniffing” position to more difficult scenarios.

The AirSim Standard also features an inflatable tongue with real-life size and texture. There is also an option to include “breakout” teeth to simulate the effects of bad practice in laryngoscopy.

The AirSim Standard is ideal for training in the use of:

- Laryngeal Masks
- Full range of supraglottic devices
- Laryngoscopes
- Tracheal Tubes
- Fibreoptic Laryngoscopes
- Needle Cricothyrotomy Systems

Trucorp recommend the following equipment sizes for optimal performance:

- 8.0-9.0 mm ID for oral intubation
- Size 3 and 4 for LMA laryngeal masks (similar respective sizes for other supraglottic devices)

Internal view of the Airsim Standard Airway



AirSim Multi

The AirSim Multi contains the key features of the AirSim Standard with the addition of a nasal passage and a chin.

The AirSim Multi facilitates training on nasal procedures as well as bag and mask ventilation techniques.

The nasal passage has been developed in a manner similar to the main airway. This gives the same anatomical realism and functionality, important landmarks such as the turbinates are clearly defined. In addition the material used offers the same tactile feedback which is delivered with the main airway itself.

These features allow AirSim Multi to be used for training and practice in naso-tracheal intubation and nasally directed fiberoptic examination.

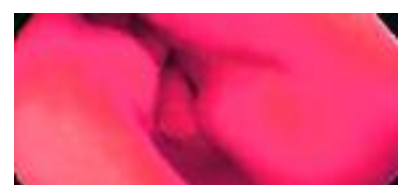
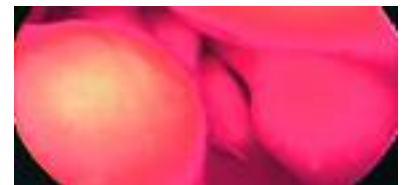
The AirSim Multi can be used in the training of all the procedures facilitated by the AirSim Standard with the addition of:

Naso-tracheal intubation
Awake fiberoptic examination
Bag & mask ventilation techniques

Trucorp recommend the following equipment sizes for optimal performance:

7.0-7.5 mm ID for nasal intubation
8.0-9.0 mm ID for oral intubation
Size 3 and 4 for LMA laryngeal masks
(similar respective sizes for other supraglottic devices)

Internal view of the Airsim Multi Nasal



AirSim Bronchi

The AirSim Bronchi is the latest product addition to the AirSim family, providing anatomically correct detail down to the fourth generation bronchi.

The AirSim Bronchi provides exceptional detail in both internal and external features; made possible through a combination of cutting edge moulding technology and carefully handcrafted processes.



The AirSim Bronchi unit will provide a solution to your training needs in:

- Diagnostic bronchoscopy.
- Lung isolation techniques using left and right endobronchial tubes and bronchial blockers.
- Lung suctioning techniques.

For clinicians and industrial clients, the AirSim Bronchi is a leading choice for demonstration of items such as:

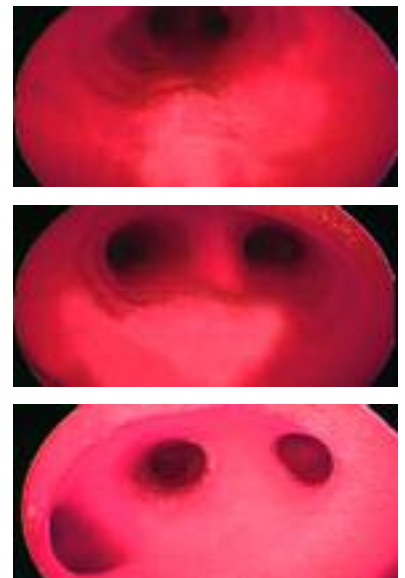
- Fibreoptic bronchoscopic equipment.
- Single and double lumen tubes and bronchial blockers.
- Specialised bronchial stents.

The AirSim Bronchi can also be used in a similar manner to the AirSim Multi and can cover an extensive range of training requirements.

Trucorp recommend the following equipment sizes for optimal performance:

- 7.0-7.5 mm ID for nasal intubation
- 8.0-9.0 mm ID for oral intubation
- Size 3 and 4 for LMA laryngeal masks
(similar respective sizes for other supraglottic devices)
- Size 35F - 37F for endobronchial tubes.

Internal view of the Airsim Bronchi



Product Specifications

Product Name	Code	Description
AirSim Standard		
AirSim Standard	AA10000	Standard Airway Model
AirSim Standard	AA10001	Breakout Teeth
AirSim Standard	AA10010	Needle Access
AirSim Standard	AA10011	Needle Access, Breakout Teeth
AirSim Multi		
AirSim Multi	AA11100	Nasal Passage, Chin
AirSim Multi	AA11101	Nasal Passage, Chin, Breakout Teeth
AirSim Multi	AA11110	Nasal Passage, Chin, Needle Access
AirSim Multi	AA11111	Chin, Needle Access, Breakout Teeth
AirSim Bronchi		
AirSim Bronchi	AA51100	Nasal Passage, Chin
AirSim Bronchi	AA51101	Nasal Passage, Chin, Breakout Teeth
AirSim Bronchi	AA51110	Nasal Passage, Chin, Needle Access
AirSim Bronchi	AA51111	Nasal Passage, Chin, Needle Access, Breakout Teeth
AirSim Stent		
AirSim Stent	AA60100	Lateral Head Positioning, Chin
AirSim Stent	AA60101	Lateral Head Positioning, Chin, Breakout Teeth

If you require any further information on our product range or wish to provide feedback, please contact us directly.

All products are shipped with "lung", CDROM containing manual and video of insertion techniques.

Products are contained in a lightweight canvas carry case.

Products are covered with 12 month warranty with extended terms available on request.

Trucorp has an extensive global distribution network, please contact us for details on your nearest distributor.



AirSim Standard

AirSim Bronchi

AirSim Multi

AirSim Stent



TruCorp is a rapidly growing company with the specific mission to research systems for medical skills training and competency assessment.

The company is a spinout from the Department of Anaesthetics at Queen's University Belfast in Northern Ireland.

TruCorp identified the requirement for medical simulation products driven by a growth in competency-based training where the emphasis is on proving that skills have been acquired and can be applied appropriately.

The AirSim range is based on faithful reproduction of the human airway anatomy and as such is invaluable as a training aid to facilitate the learning and development of airway management skills for all health professionals.

The AirSim products are rapidly becoming the trainer of choice for a wide range of professionals including:

Anaesthetists
Paramedics and First Responders
Emergency Medical Services
Nurse Anaesthetists
Surgeons
Airway Device Manufacturers

TruCorp Ltd
Whitla Medical Building
97 Lisburn Road
Belfast BT9 7BL

T: +44 028 9097 2236
F: +44 028 9097 2635
E: info@trucorp.co.uk
www.trucorp.co.uk